

Curtis Guthrie

Use this link to view Curtis' interview <https://youtu.be/FopPU6DFf7U>

Curtis and his six siblings were born and raised in this home at 828 Guthrie Road. The original log house is dated circa 1750 and was built by English immigrant Charles Wollerton. The Wollertons came from Nottingham, England and were members of Goshen Meeting. The farm, originally 233 acres, has been continuously farmed for 270 years. A sale in 1841 described the farm as "one story log house cellared under; log barn, stone stable high, spring house near dwelling...well fenced, has a good portion of woodlands and an orchard of select fruits and well watered." Lydia Guthrie purchased the farm in 1907 and the Guthrie family added dairy cattle and has farmed 57 acres for 3 generations.



"Wollerton/Guthrie Farm". Historic Resource # 16, photograph from East Bradford Township Historical Commission Files

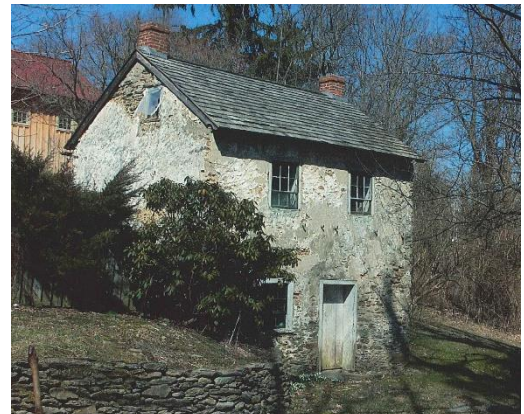
Curtis discusses this house at 815 Harmony Hill Road which was then owned by Mrs. Norton

"Woodward/Wollerton House". Historic Resource #18, photograph from East Bradford Township Historical Commission files.



and Mrs Norton's guest house, shown here, which Curtis informs us was not a blacksmith shop:

"Woodward/Wollerton" outbuilding. Historic Resource #18, photograph from East Bradford Township Historical Commission files.



At the end of the video, Curtis explains this photograph which is the road in front of the Guthrie farm.

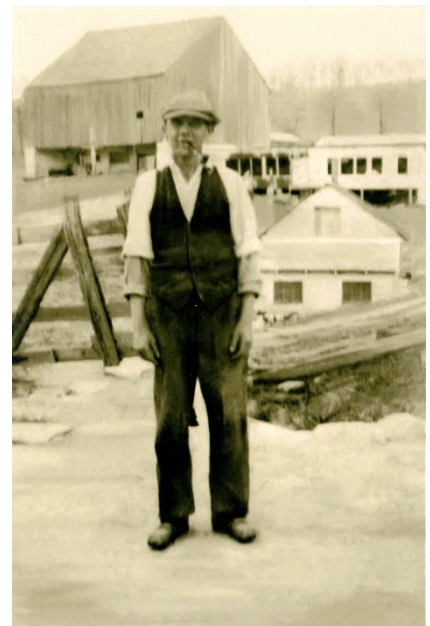


Photograph courtesy of Curtis & Lenore Guthrie



Back Row
Lydia E. Guthrie (Mother of Edwin S.), Edwin S. Guthrie, Herbert Hartshorne, Harry C. Guthrie (Father of Edwin S.)
Front Row
Arthur R. Guthrie, Ruth Hartshorne (Sister of Edwin S.), Raymond E. (Jimmy) Guthrie, Willis N. Guthrie (approx. 1918 to 1920)

Photograph courtesy of Curtis & Lenore Guthrie



Photograph courtesy of Curtis & Lenore Guthrie