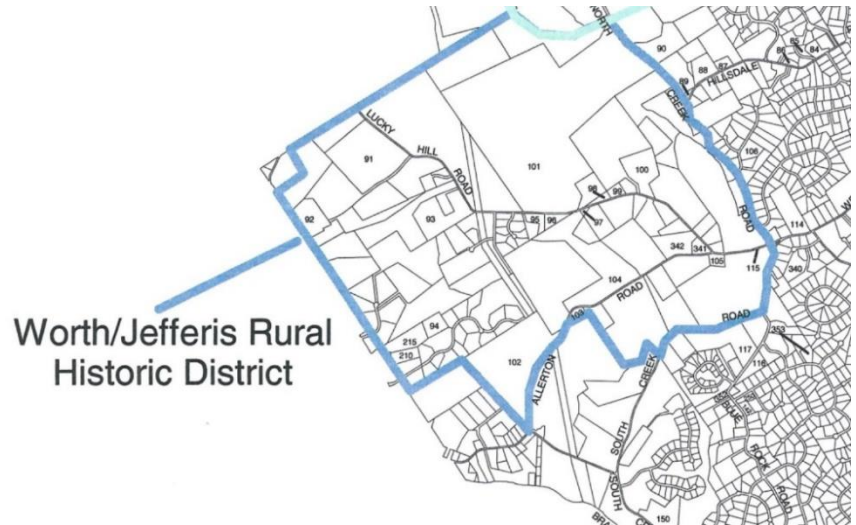


Doug and Marge Barr

We recommend that you watch Doug Barr's interview first, immediately followed by Marge Barr's interview. Use this link to watch Doug Barr's interview <https://youtu.be/jPZ7ZTLy6wA>. Use this link to watch Marge Barr's interview <https://youtu.be/Tfj7TEz1dR4>.

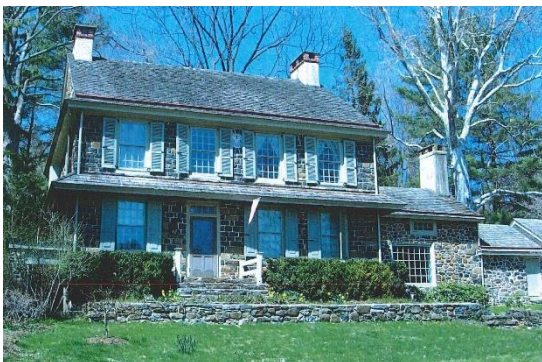
Doug and Marge Barr grew up in West Bradford, just over the East Bradford line. Doug's childhood home is on West Strasburg Road, between Marshallton and Cope's Bridge. Marge's is in the middle of Marshallton. After they married in 1949, Doug and Marge moved into East Bradford's Worth/Jefferis Rural Historic District.



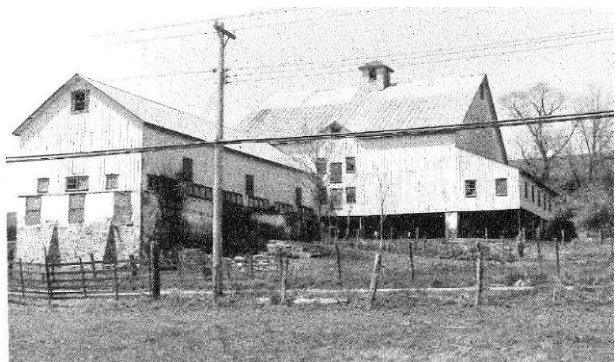
Doug's interview covers many topics including:

- Local farmers such as Pappy Hoopes
- The ESCO Cabinet Company which tested its products, like walk-in coldrooms, on the Barr's farm and several other farms in the Worth/Jefferis Historic District
- Lenape Amusement Park
- Properties you pass when travelling on West Strasburg Road from Doug's childhood home toward West Chester, including

This farm, at 965 West Strasburg Road, which was acquired by Sam Parke in 1906, and



"Taylor Parke House". Historic Resource #77, photograph from East Bradford Township Historical Commission files



"Parke Barn". Historic Resource #78, 1985 photograph of the Parke Barn from East Bradford Township Historical Commission files. Only the foundation of this barn remains. There is now a residence built within the foundation walls.

The "Abiah Taylor House" (Historic Resource #73) which is at 525 North Creek

Road



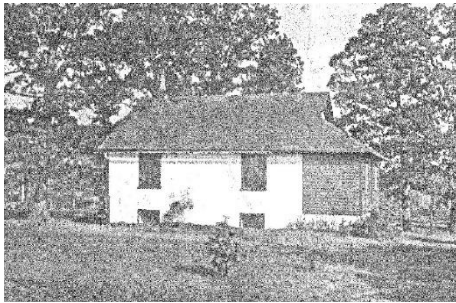
The Abiah Taylor House, photograph from the 1950's. *Historic American Buildings Survey, Creator, and Bart Anderson, Goode, Ned, photographer. Abiah Taylor House, Brandywine Creek Road East Bradford Township, Copesville, Chester County, PA. Chester County Copesville Pennsylvania, 1933. Documentation Compiled After. Photograph. Retrieved from the Library of Congress, <https://www.loc.gov/item/pa0261/>. (Accessed February 28, 2017.)*



The Abiah Taylor House. Photograph courtesy of John Milner Architects, www.johnmilnerarchitects.com

Marge's interview covers many topics including:

- The Scennelltown one room schoolhouse, where the last day of class was June 4, 1958.



The Scennelltown Schoolhouse, prior to conversion to a residence. Historic Resource #131, photograph from East Bradford Township Historical Commission files



Historic Resource #131, photograph from East Bradford Township Historical Commission files

- The "party-line" phone system
- Milk deliveries from Glen Worth Farm, which is located at 315 North Wawaset Road.

"Pashall Worth Farm". Historic Resource # 92, circa 1988 photograph from East Bradford Township Historical Commission files

