

Emma “B” Abernethy

Use this link to view Emma “B” Abernethy’s interview <https://youtu.be/4BlctTg05Ok>

Until a recent move to West Chester, Emma “B” Abernethy was a life-long resident of East Bradford Township. B’s interview covers many topics including:

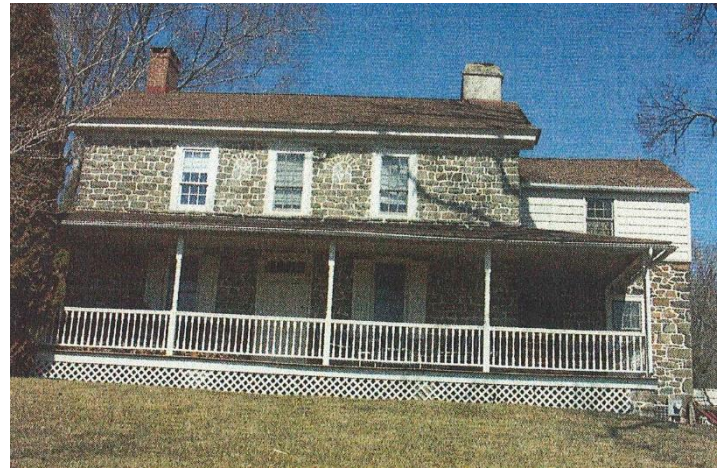
- Family life on this farm at 840 Copeland School Road from 1925 into the 21st Century

“Abernethy House”. Historic Resource #48, photograph from East Bradford Township Historical Commission files



- B’s grandparents’ farm, located at 777 Copeland School Road

“Daniel Hoopes House/Folkstone”. Historic Resource #64, photograph from East Bradford Township Historical Commission files



- Copeland Schoolhouse, constructed in 1905 and operated as a schoolhouse until 1958

Historic Resource #59, photograph from East Bradford Township Historical Commission files

